

PrEP Aware in New York State: Rest of State (ROS) by the NUMBERS

PrEP is highly effective at preventing HIV, and we must now take every step possible to raise awareness about PrEP.

NYS 2020 PrEP Target
65,000 persons



The 2020 target for Persons on PrEP in the Rest of State (ROS) is nearly **20,000**.
In 2017 the ROS had 5,031 Persons on PrEP and 733 New HIV Diagnoses.

NYS 2017 New HIV Diagnoses (n= 2,769)

2036	733
73.5%	26.5%

□ NYC □ ROS

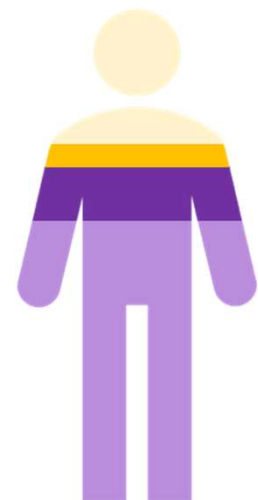
Rest of State (ROS) Persons on PrEP in 2017 (n=5,031)

18.8%, 947

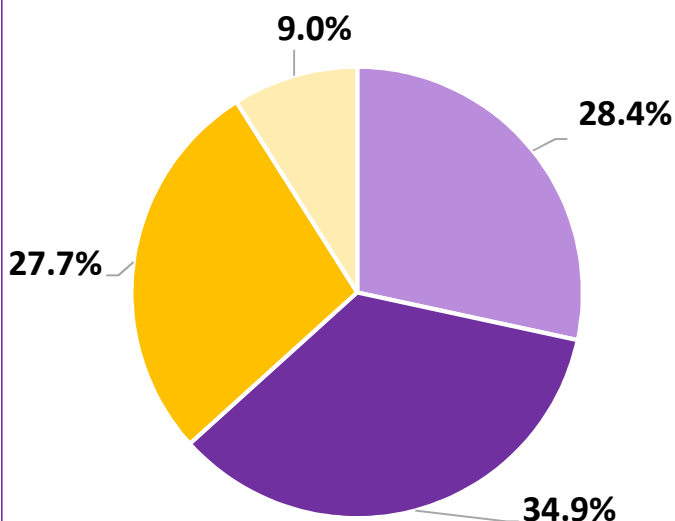
5.3%, 266

10.2%, 513

65.7%, 3305



Rest of State (ROS) New 2017 HIV Diagnosis (n=733)



- Asian, Native American, Multi-Race and Unknown
- Hispanic
- Non-Hispanic Black
- Non-Hispanic White

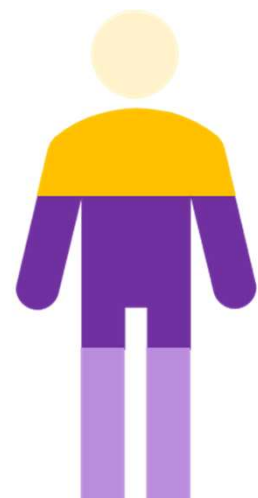
Rest of State (ROS) 2020 PrEP Target (n = 17,189)

11.1%, 1904

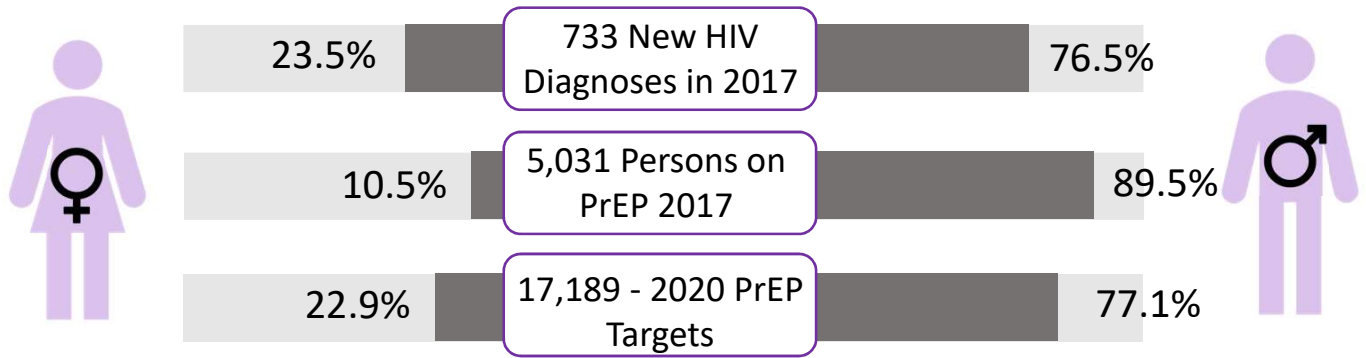
27.8%, 4780

31.8%, 5467

29.3%, 5038



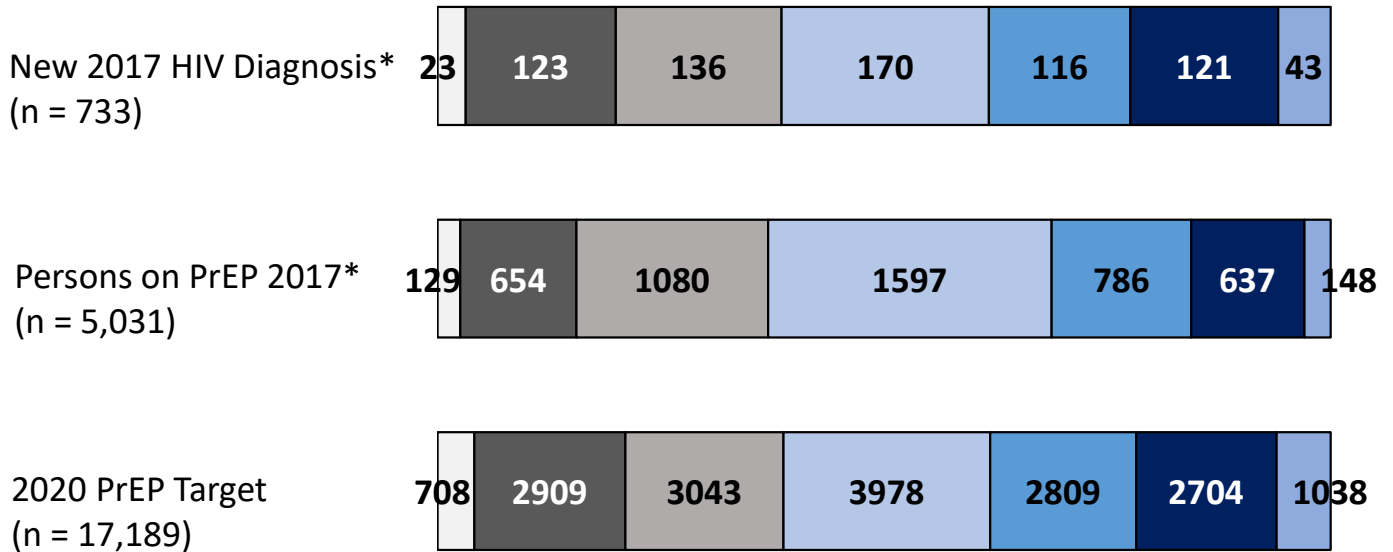
Rest of State (ROS) - Sex at Birth



Rest of State (ROS) - Age

Legend for Age Groups:

- 13-19
- 20-24
- 25-29
- 30-39
- 40-49
- 50-59
- 60+



* Persons under the age of 13 are not included.

Useful Resources:

NYS Clinical Guidelines
www.hivguidelines.org

PrEP Provider Directory
<https://providerdirectory.aidsinstituteny.org/>

PrEP Awareness FAQ for consumers
https://www.health.ny.gov/diseases/aids/providers/testing/docs/testing_fact_sheet.pdf

Let's make everyone Aware that PrEP can prevent HIV.
www.prepforsex.org

Questions?

Email:
PrEP@health.ny.gov



Please note that these PrEP targets are based on estimates of the number of persons that can benefit from PrEP. They are created as a tool to help inform programming, and are useful as a comparison point for actual PrEP distribution within a region. These values are approximates based on rounding, when the data was last updated, and uncertainty with regard to geography based on the overlap of zip codes between Ryan White Regions.

Data source: IDV® (Integrated Dataverse) from Symphony Health & the NYS Medicaid Data Warehouse (MDW)

**Published
Fall 2019**